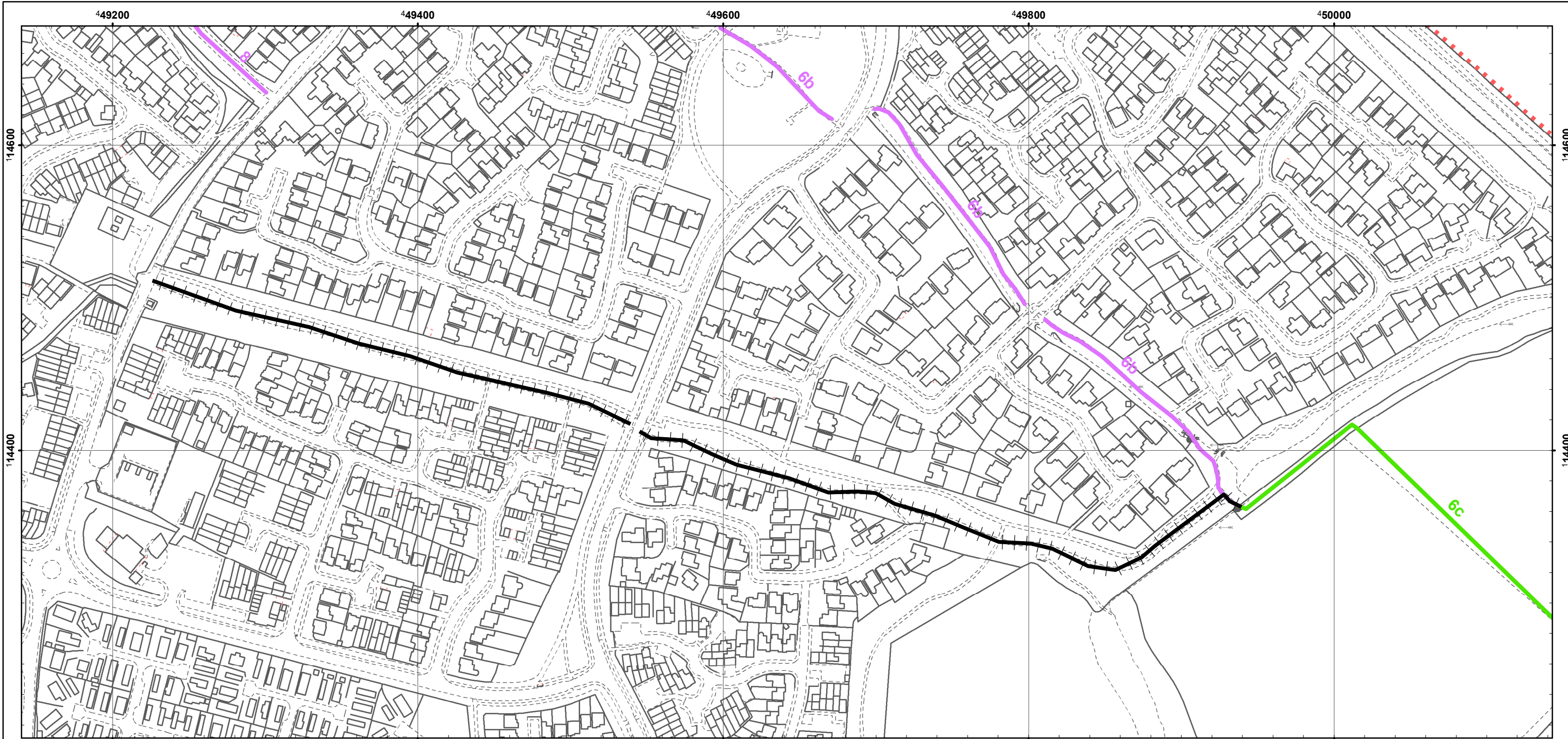


HAMPSHIRE COUNTY COUNCIL

MAP REFERRED TO IN
THE HAMPSHIRE
(EASTLEIGH BOROUGH COUNCIL NO.27)
(PARISH OF HEDGE END)

PUBLIC PATH CREATION AND DEFINITIVE MAP MODIFICATION ORDER 2019



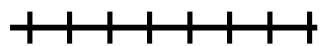
SCALE 1:2,500

LEGEND

FOOTPATH TO BE
RETAINED:-



BRIDLEWAY TO BE
ADDED:-



BRIDLEWAY TO BE
RETAINED:-



PARISH BOUNDARY:-



MAP PRODUCED FROM DIGITAL DATA
SUPPLIED BY ORDNANCE SURVEY

THE COMMON SEAL OF HAMPSHIRE COUNTY
COUNCIL WAS HEREUNTO AFFIXED IN THE
PRESENCE OF:-

..... AUTHORIZED
SIGNATORY

DATE.....

REPRODUCED FROM THE O.S. MAPPING
WITH THE PERMISSION OF THE
CONTROLLER OF HMSO © CROWN.
UNAUTHORISED REPRODUCTION
INFRINGES © CROWN AND MAY LEAD TO
PROSECUTION OR CIVIL PROCEEDINGS.
HCC LICENCE No.100019180 DATE (1.5.2019)

FELICITY ROE,
DIRECTOR OF CULTURE, COMMUNITIES
AND BUSINESS SERVICES, WINCHESTER